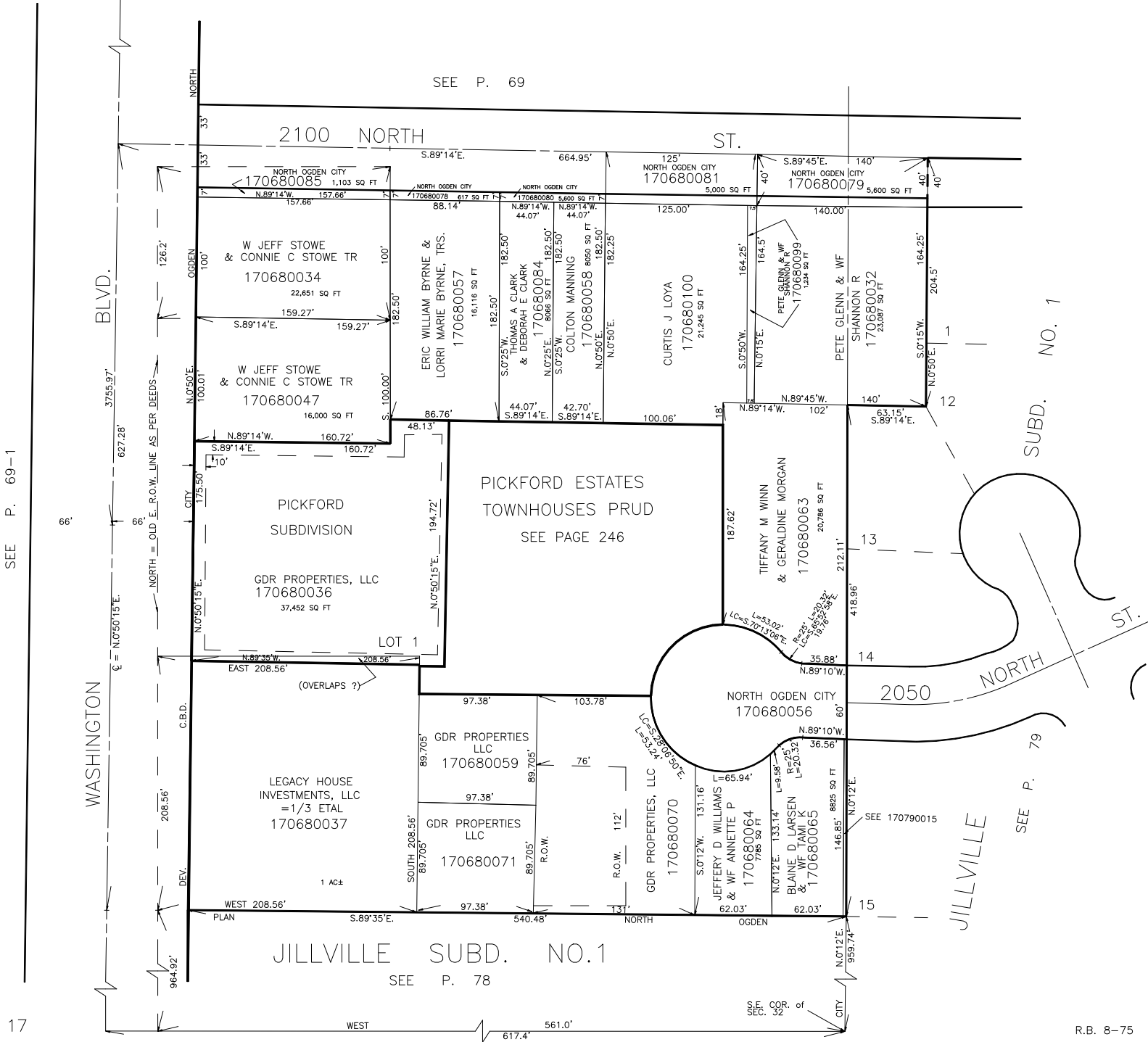


PART OF S.E. 1/4
SECTION 32, T.7N., R.1W., S.L.B. & M.

IN NORTH OGDEN CITY

TAXING UNIT: 10

SCALE 1" = 60'



SEE P. 69-1

17

SEE P. 69

PICKFORD ESTATES
TOWNHOUSES PRUD
SEE PAGE 246

JILLVILLE SUBD. NO. 1
SEE P. 78

SUBD. NO. 1

SEE P. 79

1/4 SEC. 32 of